

Panels

ABB Ability™ System 800xA® hardware selector



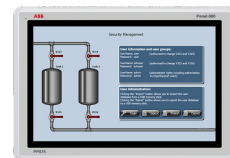
The Panel 800 family comprises user-friendly, intuitive, and ergonomic operator panels that combine slim, space-saving dimensions with a comprehensive range of advanced functions. Designed to make process automation easy, all panels are equipped with touchscreen operation with advanced functionality for process and equipment control.

The Panel 800 family is configured using ABB's Panel Builder tool which contains a wide range of advanced functions.

A wide range of user-friendly, intuitive, and ergonomic operator panels for process automation systems gives you the right information at the right time, and in the right place. The Panel 800 family is configured using ABB's Panel Builder tool which contains a wide range of advanced functions. The functions are tested and developed with customer needs and preferences in focus.

For updated information regarding this hardware please visit our Hardware Selector. In the hardware selector, you can compare different controllers, communication interfaces, I/O systems, I/O module termination units, network equipment, panels, power supplies & voters. Print your own PDF files or save an outline of all modules in the product area.

Below is an outline of the range of different panels available.



Specific feature ¹	Panel 800 6.2 2000 tags (Dongles)	Panel 800 6.2 250 tags (Dongles)	Panel 800 6.2 4000 tags (Dongles)	PP875
General info				
Article number	3BSE093565R1	3BSE093564R1	3BSE093566R1	3BSE092977R1
Processor	Standard PC running Win 7 or Win 10			ARM9 (1 GHz)
External storage media	Uses ordinary PC USB port.			2 GB (SSD), 1.5 GB free for application storage
Net weight (kg)	0.13 kg			0.8
Operating temperature	-30 °C to +70 °C			-10 °C to +60 °C
Category				Standard
Display type				Touch
Display size				7"
Brightness				350 cd/m²
Display resolution, ratio				800 x 480 (16:9)
Main memory				512 MB
Dimension WxHxD (mm)				204 x 143 x 50 mm
Power supply				+ 24 V DC (18 to 32 V DC)
Dimensions				
Dimension W×H×D (mm)				204 x 143 x 50 mm
Cut-out dimension W×H (mm)				187 x 126 mm
Mounting depth mm. (Including clearance)				43 (143)
Mounting				Panel Mount and VESA 75 × 75
Environment and certification				
RoHS compliance	DIRECTIVE/2011/65/EU			
WEEE compliance	DIRECTIVE/2012/19/EU			

¹ For detailed information on each module, please visit: 800xahardwareselector.com